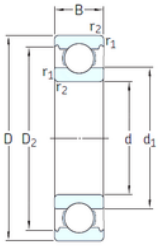




Double BALL BEARINGS CO, LTD



VA201



2Z/VA201



2Z/VA208



2Z/VA228

15 mm x 35 mm x 11 mm SKF 6202-2Z/VA201 deep groove ball bearings

Bearing No. 6202-2Z/VA201

6202-2Z/VA201 Bearing 2D drawings and 3D CAD models

Size	15x35x11 mm
Bore Diameter	15 mm
Outer Diameter	35 mm
Width	11 mm
d	15 mm
D	35 mm
B	11 mm
C	11 mm
d1	21,7 mm
r1 min.	0,6 mm
r2 min.	0,6 mm
D2	30,4 mm
Weight	0,045 Kg
Temperature -	30 to +250 °
Basic static load rating (C0)	3,75 kN
Category	Single Row Ball Bearings
Inventory	0.0
Manufacturer Name	SKF
Minimum Buy Quantity	N/A
Weight / Kilogram	0.049
Product Group	B00308
Enclosure	2 Metal Shields
Precision Class	ABEC 1 ISO P0
Maximum Capacity / Filling Slot	No
Rolling Element	Ball Bearing



Double BALL BEARINGS CO, LTD

Snap Ring	No
Internal Special Features	Polyalkylene Glycol/Graphite Mixture Filled
Cage Material	Steel
Internal Clearance	C0-Medium
Inch - Metric	Metric
Long Description	15MM Bore; 35MM Outside Diameter; 11MM Outer Race Width; 2 Metal Shields; Ball Bearing; ABEC 1 ISO P0; No Filling Slot; No Snap Ring; Polyalkylene Glycol/Graphite Mixture Filled Internal Special Fea
Other Features	Deep Groove Extreme Temperature Variant
Category	Single Row Ball Bearing
UNSPSC	31171504
Harmonized Tariff Code	8482.10.50.68
Noun	Bearing
Keyword String	Ball
Manufacturer URL	http://www.skf.com
Manufacturer Item Number	6202-2Z/VA201
Weight / LBS	0.099
Bore	0.591 Inch 15 Millimeter
Outer Race Width	0.433 Inch 11 Millimeter
Outside Diameter	1.378 Inch 35 Millimeter
Inner Race Width	0 Inch 0 Millimeter
bore diameter:	15 mm
precision rating:	Not Rated
outside diameter:	35 mm
finish/coating:	Uncoated
overall width:	11 mm
cage material:	Steel



Double BALL BEARINGS CO, LTD

bore type:	Round
outer ring width:	11 mm
closure type:	Double Shielded
fillet radius:	0.6 mm
row type & fill slot:	Single Row Non-Fill Slot
maximum rpm:	360 RPM
internal clearance:	C0
series:	62
operating temperature range:	-20 to +480 ° F
resistance features:	Corrosion Resistant, Extreme Temperature
static load capacity:	3.75 kN
d_1	21.7 mm
D_2	30.35 mm
$r_{1,2}$ min.	0.6 mm
d_a min.	19.2 mm
d_a max.	21.6 mm
D_a max.	30.8 mm
r_a max.	0.6 mm
Basic dynamic load rating C	8.06 kN
Basic static load rating C_0	3.75 kN
Limiting speed	180 r/min
Limiting temperature T max.	250 ° C
Mass bearing	0.048 kg